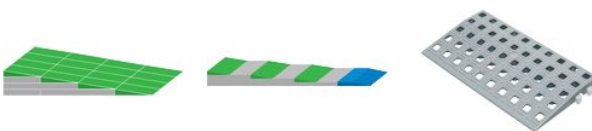
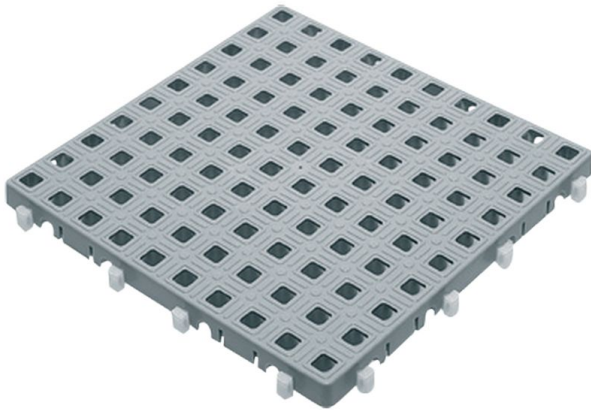


## Set of 20 tiles



- Pack of 100 C-Locks - 999033
- Pack of 100 R-locks - 999115
- Pack of 100 T-Locks - 999032
- Set of 25 slopes A - 825074
- Set of 25 slopes B - 825075

### • 9 parts

#### SET OF 20 TILES 25 X 25 CM

Flat tile, dimensions 25 x 25 x 1.8 cm. Connecting pieces on 2 sides. Grey colour. Set of 20.  
(This product is no longer available for sale).

#### SET OF 14 ANTI-SLIP SUB-TILES

To be inserted under the tiles to make the top more non-slip. Ideal for shower trays. Dimensions: 11.6 x 11.6 x 2 cm. Set of 14.  
(This product is no longer available for sale).

#### PACK OF 26 HALF TILES

Flat half tile, dimensions 25 x 12.5 x 1.8 cm. Assembly parts on 2 sides. Grey colour. Set of 26.

#### SET OF 25 SLOPING SURFACES A

Inclined plane without flat surface, dimensions 25 x 12.5 x 2.1 / 0.2 cm. Grey colour. Set of 25. On the diagrams, these inclined planes are in green.

#### SET OF 25 SLOPING SURFACES B

Inclined plane with plate, dimensions 25 x 12.5 x 1.8 / 0.2 cm. Grey colour. Set of 25. On the drawings, these inclined planes are in blue

#### SET OF 100 T-LOCKS

For connecting slabs and half-slabs vertically. Dimensions: 3.5 x 1.4 x 1.4 cm. Colour grey. Box of 100.

#### PACK OF 100 R-LOCKS

For connecting inclined planes vertically to slabs or half-slabs. Suitable for the first two rows of holes on sloping surfaces A and only the first row on sloping surfaces B. For the following ones, use T-Locks. Dimensions: 2.4 x 1.4 x 1.4 cm. Colour: grey. Box of 100.

#### PACK OF 100 C-LOCKS

For connecting ramps horizontally. Dimensions: 1.6 x 0.8 x 1.5 cm. Colour grey. Box of 100.

#### SET OF 50 S-LOCKS

Long connection for high ramps.

#### Variantes :

- Pack of 100 C-Locks
- Pack of 100 R-locks
- Pack of 100 T-Locks
- Set of 14 non-slip sub-tiles
- Set of 20 tiles 25 x 25 cm
- Set of 25 slopes A
- Set of 25 slopes B
- Set of 26 half tiles
- Pack of 50 s-locks

- Set of 26 half tiles - 825073

- Pack of 50 s-locks - 998320

**Date d'impression : 21/09/2024**