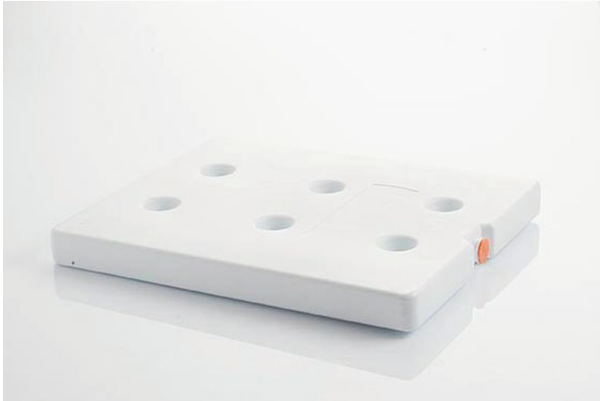


Eutectic plate 18°C Hemobox



- **Hemobox range**

The eutectic plate reproduces a defined temperature homogeneously over a long period. It ensures the long-term preservation and integrity of samples. Designed for the Hemobox case, it allows an optimal circulation of the temperature from the top to the bottom for a better preservation.

2 sizes available: M or L.

Dim. rigid plate model M: 175 x 105 x 30, weight: 485.6 g.
Size of the rigid plate model L: 320 x 175 x 30, weight: 1500g.

Variantes :

- M
- L