

Back brace posture corrector



- **Back brace that helps maintain the alignment of the spine**
- **Immediately adopt a straighter posture**

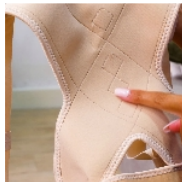
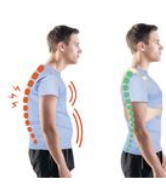
The back brace is a natural and comfortable way to immediately adopt a straighter posture when standing, sitting or walking. Creates a more upright posture. This device helps maintain the alignment of the spine. Very soft fabric with buckle.

2 sizes available :

- S/M for a chest circumference of 60 to 95 cm.
- L/XL for a chest circumference of 95 to 130 cm.

Variantes :

- L/XL
- S/M



- L/XL - 829106.L

- S/M - 829106.S