

Pump suction ocup grab bar



- With grip indication for added security
- Large rubber

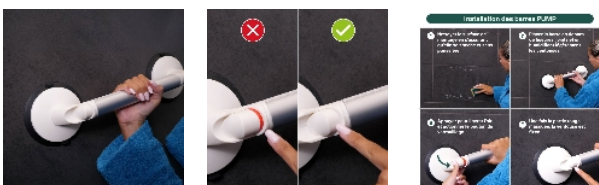
Apply the Pump bar to a smooth, clean surface to secure it. Press the side pump several times to remove the air, and when the red part on the other side disappears, the bar will be firmly attached to the surface. Equipped with large rubber suction cups.

2 lengths available : 35 cm and 45 cm.
Aluminium handrail.
Suction cup width : 135 mm.
35 cm model : Handrail length: 16 cm.
Weight: 630 g.
45 cm model : Handrail length: 25 cm.
Weight: 700 g.

Maximum user weight : 60 kg.

Variantes :

- 35 cm
- 45 cm (18 inches)



- 35 cm - 815230

- 45 cm (18 inches) - 815231